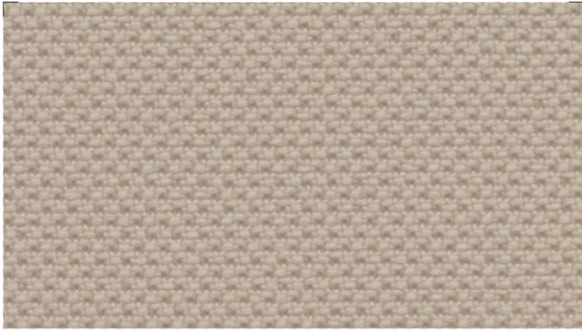


**Cat. 1****ALBA**

AB 6



Composizione - *Composition* - *Composition*:

**100% Poliestere - 100% Polyester - 100% Polyester**

Peso - *Weight* - *Poids*: **320 g/m<sup>2</sup>**

Resistenza all'abrasione (cicli) - *Abrasion resistance (rubs)*  
*Résistance à l'abrasion (tours)*:

**100.000 Martindale**



AB 7



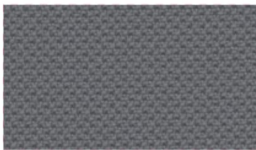
AB 8



AB 13



AB 14



AB 9



AB 5



AB 4



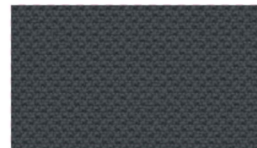
AB 3



AB 10



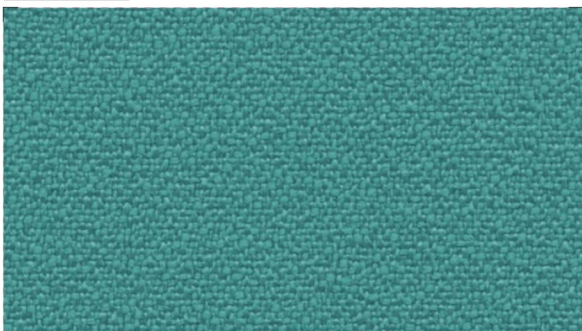
AB 11



AB 12



AB 1

**Cat. 1****BONDAY**

BD 6



Composizione - *Composition* - *Composition*:

**100% Poliestere - 100% Polyester - 100% Polyester**

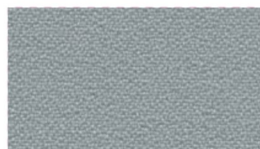
Peso - *Weight* - *Poids*: **250 g/m<sup>2</sup>**

Resistenza all'abrasione (cicli) - *Abrasion resistance (rubs)*  
*Résistance à l'abrasion (tours)*:

**150.000 Martindale**



BD 10



BD 9



BD 11



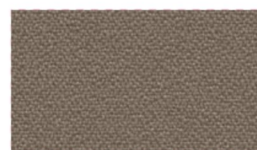
BD 3



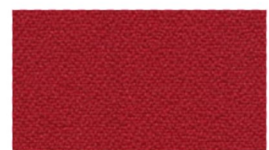
BD 13



BD 12



BD 5



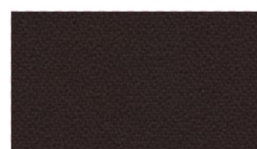
BD 2



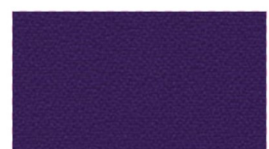
BD 4



BD 1



BD 8



BD 7

**Cat. 2****BERLIN**

BL 14



Composizione - *Composition* - Composition:

**100% Poliestere FR - 100% Polyester FR - 100% Polyester FR**

Peso - *Weight* - Poids: **400 g/m<sup>2</sup>**

Resistenza all'abrasione (cicli) - *Abrasion resistance (rubs)*  
 Résistance à l'abrasion (tours):

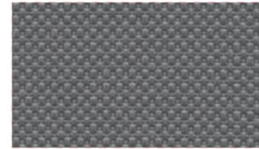
**80.000 Martindale**



BL 13



BL 4



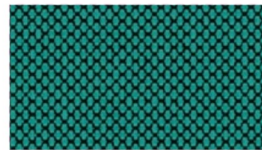
BL 9



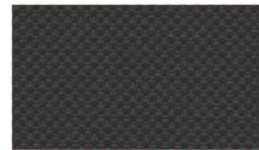
BL 15



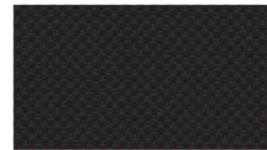
BL 7



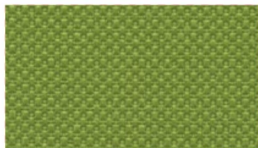
BL 17



BL 12



BL 10



BL 6



BL 16



BL 5



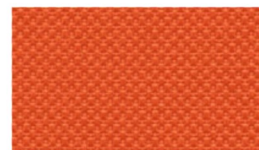
BL 8



BL 11



BL 22



BL 3



BL 1

**Cat. 2****KING**

KN 10



Composizione - *Composition* - Composition:

**100% Poliestere Trevira CS - 100% Polyester Trevira CS**  
**100% Polyester Trevira CS**

Peso - *Weight* - Poids: **300 g/m<sup>2</sup>**

Resistenza all'abrasione (cicli) - *Abrasion resistance (rubs)*  
 Résistance à l'abrasion (tours):

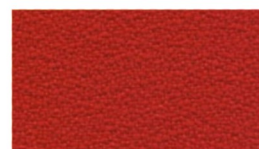
**100.000 Martindale**



KN 20



KN 12



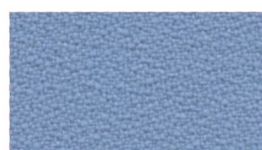
KN 9



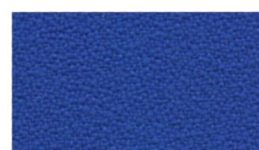
KN 4



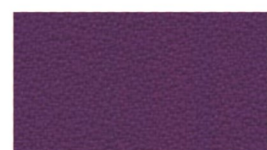
KN 25



KN 37



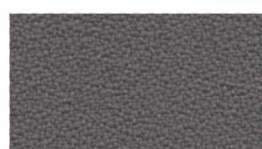
KN 3



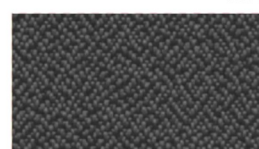
KN 23



KN 5



KN 18



KN 22



KN 1

**Cat. 2****MINI**

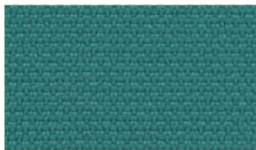
MN 11



MN 2



MN 1



MN 7



MN 8



Composizione - Composition - Composition:

**100% Poliestere Trevira CS - 100% Polyester Trevira CS**  
**100% Polyester Trevira CS**

Peso - Weight - Poids: **340 g/m<sup>2</sup>**

Resistenza all'abrasione (cicli) - Abrasion resistance (rubs)  
 Résistance à l'abrasion (tours):

**100.000 Martindale**



MN 9



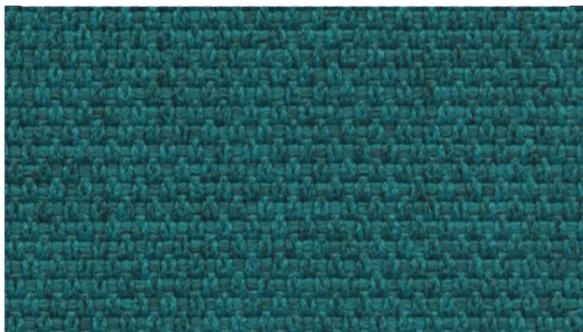
MN 10



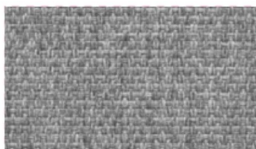
MN 3



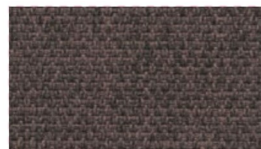
MN 4

**Cat. 3****MINI MELANGE**

MLG 6



MLG 9



MLG 11



MLG 12



MLG 13



MLG 3



MLG 4



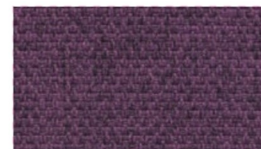
Composizione - Composition - Composition:

**100% Poliestere Trevira CS - 100% Polyester Trevira CS**  
**100% Polyester Trevira CS**

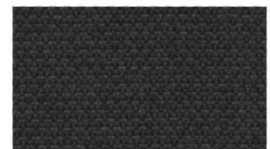
Peso - Weight - Poids: **340 g/m<sup>2</sup>**

Resistenza all'abrasione (cicli) - Abrasion resistance (rubs)  
 Résistance à l'abrasion (tours):

**100.000 Martindale**



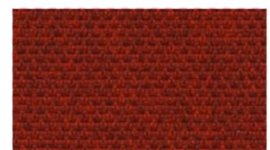
MLG 8



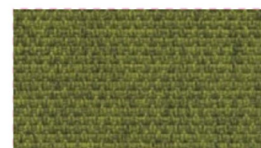
MLG 10



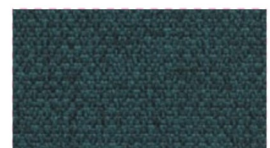
MLG 2



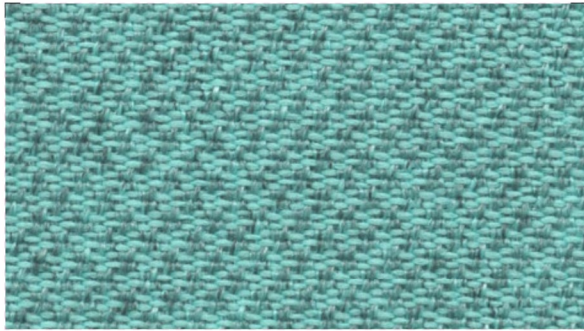
MLG 1



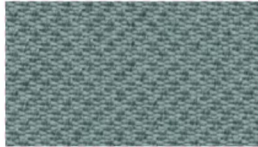
MLG 5



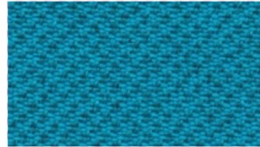
MLG 7

**Cat. 3****SEALIFE**

SF 3



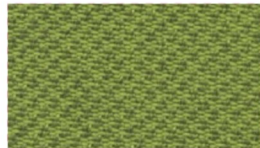
SF 7



SF 4



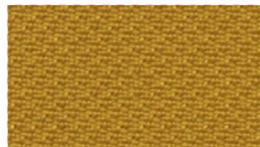
SF 10



SF 11



SF 9



SF 12



Composizione - *Composition* - Composition:

**100% Poliestere riciclato - 100% Recycled Polyester**  
**100% Polyester recyclé**

Peso - *Weight* - Poids: **330 g/m<sup>2</sup>**

Resistenza all'abrasione (cicli) - *Abrasion resistance (rubs)*  
 Résistance à l'abrasion (tours):

**100.000 Martindale**



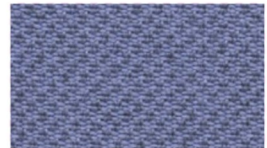
SF 5



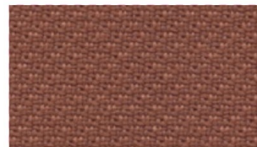
SF 8



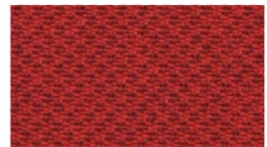
SF 13



SF 6



SF 2



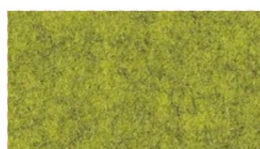
SF 1

**Cat. 4****LANA**

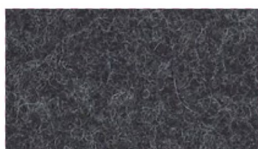
LN 1



LN 5



LN 6



LN 10



LN 4



Composizione - *Composition* - Composition:

**100% Pura lana vergine - 100% Pure wool - 100% Pure laine**

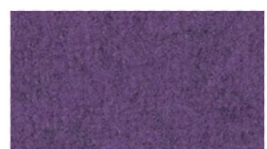
Peso - *Weight* - Poids: **410 g/m<sup>2</sup>**

Resistenza all'abrasione (cicli) - *Abrasion resistance (rubs)*  
 Résistance à l'abrasion (tours):

**50.000 Martindale**



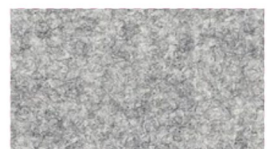
LN 7



LN 8



LN 3



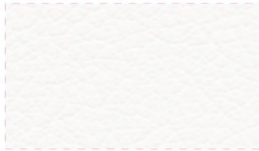
LN 9

**Cat. 2****INCA**

IC 10



Composizione - Composition - Composition:

**88% PVC - 8% PES - 4% COT**Peso - Weight - Poids: **650 g/m<sup>2</sup>**Resistenza all'abrasione (cicli) - Abrasion resistance (rubs)  
Résistance à l'abrasion (tours):**200.000 Martindale**

IC 6



IC 16



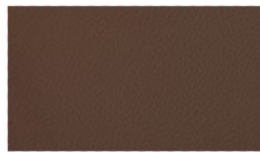
IC 3



IC 2



IC 17



IC 8



IC 9



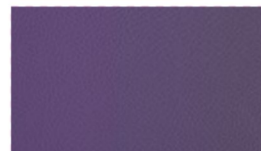
IC 20



IC 4



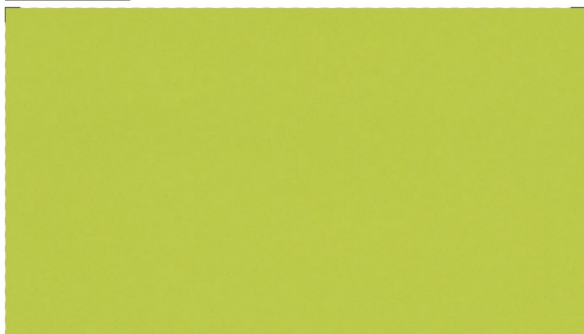
IC 1



IC 23



IC 5

**Cat. 3****AUREA MOOD**

AM 14



Composizione - Composition - Composition:

**72% PVC - 25% COT - 3% PU**Peso - Weight - Poids: **600 g/m<sup>2</sup>**Resistenza all'abrasione (cicli)  
Abrasion resistance (rubs)  
Résistance à l'abrasion (tours):**100.000 Martindale**

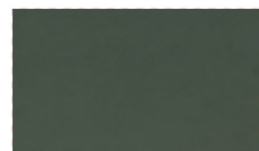
AM 1



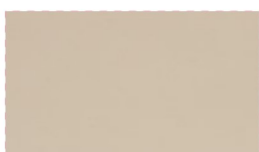
AM 23



AM 24



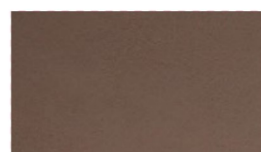
AM 16



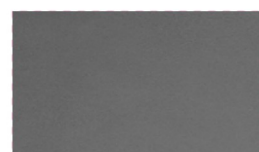
AM 4



AM 18



AM 27



AM 28



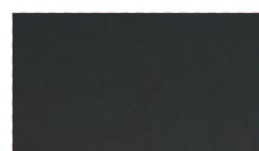
AM 9



AM 10



AM 11



AM 26

## PELLE



PL 15



PL 6



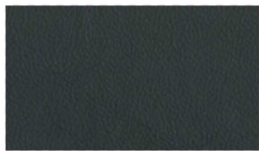
PL 10



PL 16



PL 9



PL 2



PL 1



Composizione - Composition - Composition:

**100% Pelle bovina smerigliata e conciata**  
**100% Genuine leather**  
**100% Cuir véritable**

Spessore - Depth - Epaisseur: **0,9/1 mm**



PL 7



PL 4



PL 20



PL 3

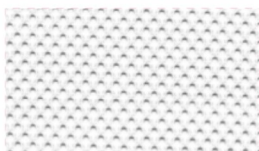


Pelle con concia ecologica e/o pelle ignifuga disponibile su richiesta. Contatta un nostro commerciale per maggiori informazioni. *Leather with ecological tanning and/or fire-resistant leather available upon request. Contact our sales representative for more information.* Cuir avec tannage écologique et/ou cuir ignifuge disponible sur demande. Contactez notre commercial pour plus d'informations.

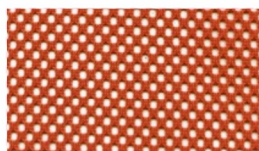
## RETE



RT 4



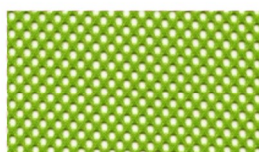
RT 2



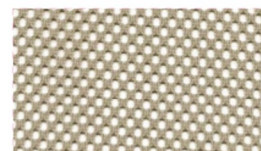
RT 5



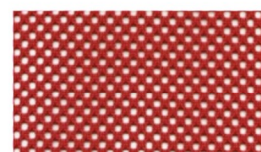
RT 1



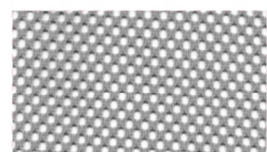
RT 7



RT 9



RT 6



RT 3



Composizione - Composition - Composition:

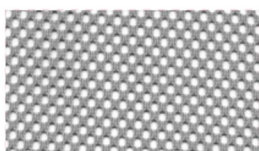
**100% Poliestere - 100% Polyester - 100% Polyester**

Peso - Weight - Poids: **330 g/m<sup>2</sup>**

Resistenza all'abrasione (cicli) - Abrasion resistance (rubs)  
 Résistance à l'abrasion (tours):

**100.000 Martindale**

## RETE IGNIFUGA



RT IGN 3



RT IGN 4



RT IGN 1



Nome tessuto Fabric name Nom du tissu	Resistenza al fuoco Flammability Classement au feu	Solidità allo sfregamento Fastness to rubbing Solidité au frottement EN ISO 105-X12	Solidità alla luce Light fastness Solidité à la lumière EN ISO 105-B02	Pilling EN ISO 12945-2
ALBA	UNI 9175 Class 1 IM EN 1021-1 & 2 BS Crib 5 BS 7176 Class Medium Hazard California TB117	4/5 (scala dei grigi)	6 (scala dei blu)	5
BONDAY	UNI 9175 Class 1 IM EN 1021-1 & 2 BS 5852 Crib 5 BS 7176 Medium Hazard NF D 60013 AM 18 California TB117:2013	4/5 (scala dei grigi)	6 (scala dei blu)	5
BERLIN	UNI 9174 - 8456 Class C1 UNI 9175 Class 1 IM DIN 4102 Class B1 NF 92501-7 Class M1 NF D 60013 Class AM18 EN 1021-1 & 2 BS Crib 5 BS 7176 Class Medium Hazard EN 13773 Class 1 OENORM 3800-1 Class B1,Q1,TR1 California TB117 USA NFPA 701 USA NFPA 260	4/5 (scala dei grigi)	6 (scala dei blu)	5
KING	UNI 9174 - 8456 Class C1 UNI 9175 Class 1 IM DIN 4102 Class B1 NF 92501-7 Class M1 NF D 60013 Class AM18 EN 1021-1 & 2 BS Crib 5 BS 7176 Class Medium Hazard EN 13773 Class 1 OENORM 3800-1 Class B1,Q1,TR1 California TB117 USA NFPA 701 USA NFPA 260 IMO Part 8 Upholstery	4/5 (scala dei grigi)	6 (scala dei blu)	5
MINI & MINI MELANGE	UNI 9174 - 8456 Class C1 UNI 9175 Class 1 IM DIN 4102 Class B1 NF 92501-7 Class M1 NF D 60013 Class AM18 EN 1021-1 & 2 BS Crib 5 BS 7176 Class Medium Hazard EN 13773 Class 1 OENORM 3800-1 Class B1,Q1,TR1 California TB117 USA NFPA 701 USA NFPA 260 IMO Part 8 Upholstery	4/5 (scala dei grigi)	6 (scala dei blu)	5
SEALIFE	UNI 9175 Class 1 IM EN 1021-1 & 2 BS 7176 Class Low Hazard California TB 117:2013	4/5 (scala dei grigi)	6 (scala dei blu)	5
LANA	1 IM UNI 9175 EN 1021-1 & 2:2006 California TB 117:2013 IMO NFA260-2019 EN 13772:2011 BS5852-1:1979	4/5 (scala dei grigi)	5 (scala dei blu)	5
INCA	Classe 1IM - UNI 9175 California TB 117:2013 - FMVSS 302 UNI EN 1021-1 & 2:2014 BS 5852 : 2006 source 0 & source 1	4 (scala dei grigi)	4/5 (scala dei grigi) EN ISO 4892-2 B1&B2	/
AUREA MOOD	UNI 9175 classe 1IM EN 1021-1 & 2 BS 5852-1 cigarette test BS 5852-1 match test California TB 117:2013 IMO res. A.652(16)	5 (scala dei grigi)	6/7 (scala dei blu)	/
PELLE IGNIFUGA	UNI 9175:2010 1IM UNI 9175:1987 UNI 9175_FA:1994 3IM	4 (scala dei grigi)	6 (scala dei blu)	/
RETE IGNIFUGA	UNI 8457(1987)-UNI 8457/A1(1996) RAPP.PROVA CL.1 SEDIA RIGIDA-N.524.0 UNO 180/8 UNI 9174(1987)-UNI 9174/A1(1996) RAPP.PROVA CL.1 SEDIA RIGIDA-N.524.0 UNO 180/8 EN 1021 Part 1-2 using a CM Foam 35 Kg/cu.m.	4/5 (scala dei grigi)	6 (scala dei blu)	5



